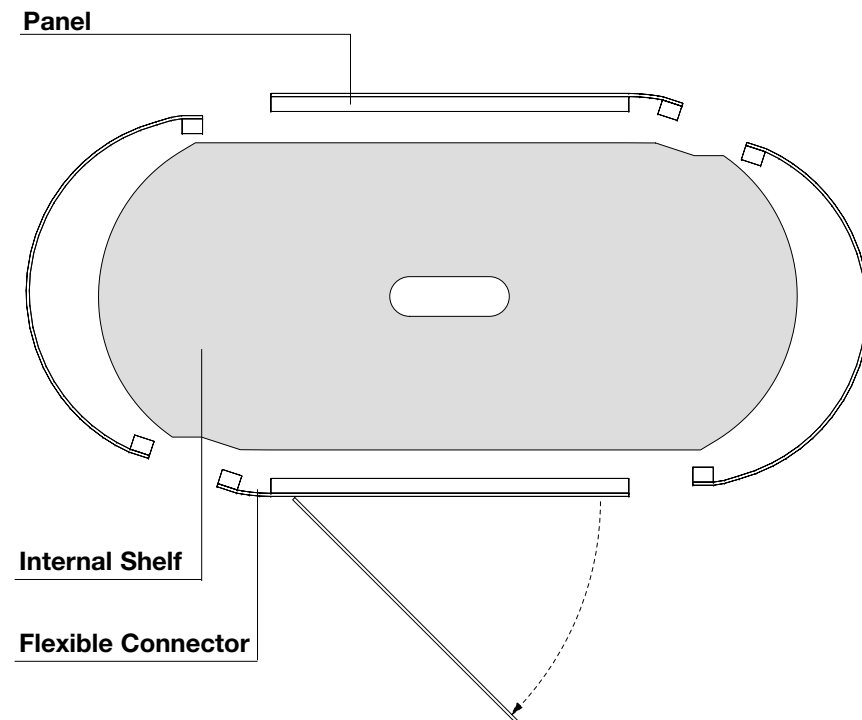
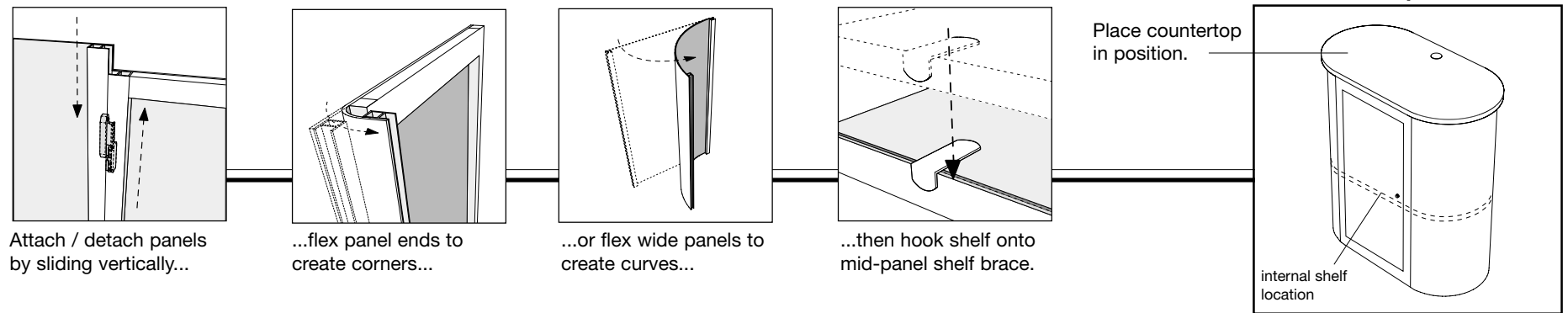
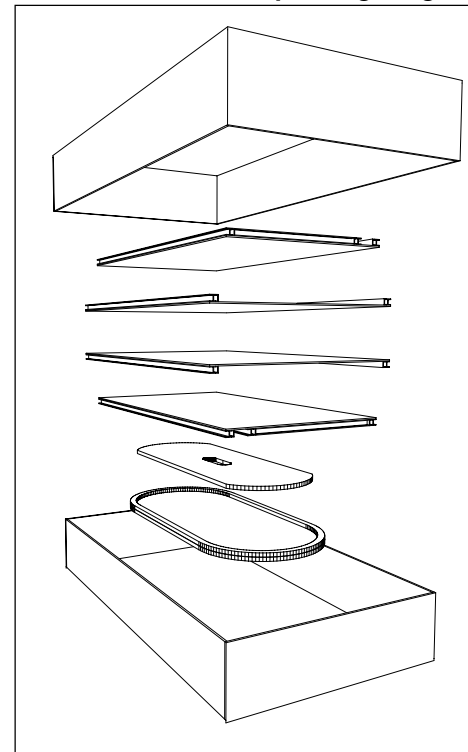


## Capsule Counter



### Repacking Diagram



Your FlexCounter™ is so well-constructed...  
We GUARANTEE It!

#### WHAT IS COVERED

**Repairs:** This warranty covers repairs or replacements to correct defects during the Warranty Period.

**Warranty Period:** The warranty period begins on the day you receive covered Nomadic products that have been purchased on or after September 20, 2002, and ends at the expiration of the coverage listed below.

**Coverage:** FlexCounters are covered for defects due to materials or craftsmanship for one year while owned by the original retail purchaser.

**Chargeable Repairs:** Items not covered by warranty may be repaired at a reasonable cost that is agreed to in advance between you and Nomadic.

**Shipping Costs:** You will pay in and outbound shipping charges.

#### WHAT IS NOT COVERED

**Graphics:** No graphic, computer-graphic or photographic treatments of any kind are covered by this warranty.

Damage due to vandalism, theft, fire, natural disasters, or losses in shipment may be covered by your insurance and/or common carrier. Please check these resources prior to calling Nomadic.

**Consequential Expenses:** Economic losses, including personal time and inconvenience, are not covered. Some states do not allow limitations on how long an implied warranty will last or the exclusion or limitation of incidental or consequential damage, so cited limitation or exclusions may not apply to you.

#### TO ARRANGE A REPAIR

Call your local Nomadic Representative or Nomadic Display's Customer Service Center with your sales number and provide any other information that is requested.

Sales Order Number \_\_\_\_\_

**Warning! Do Not Stand on Counter. Maximum load is: 100lbs (45.45Kgs).**

# Nomadic Display®