

QUIKFRAME SET-UP INSTRUCTIONS

CHANGING GRAPHICS:

- 1** Open the four sides of the frame.



- 2** Place the graphic on the hardboard and then put the non-glare protection sheet on top of the graphic.



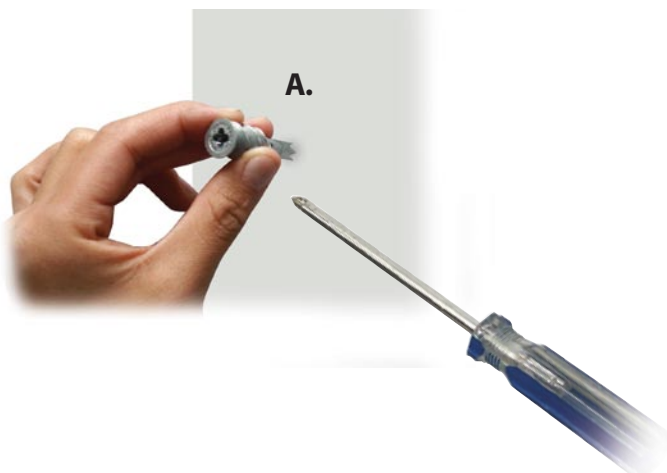
- 3** Snap down the four sides of the frame.



WALL MOUNTING WITH SCREWS:

Drywall application:

- 1** Screw in the anchor clockwise with screwdriver until it is seated flush with the wall (**A**).
- 2** Open the frame, place the screws over the four pre-drilled holes on either side of the frame, and tighten the screws securely into the anchor (**B**).



Concrete / solid surface application:

Option 1:

- 1** Hold frame to wall, mark position of pre-drilled holes in frame, and drill four holes in concrete or solid surface. Insert four wall plugs in drilled holes.
- 2** Reposition frame on wall and drive four screws into wall plugs until tight (**B**).

Option 2:

- 1** Hold frame to wall. Mark position of holes. Drill four pilot holes.
- 2** Hold frame to wall. Drive Tapcon screws into concrete holding frame in place (**B**).

