

PROMOTOR ASSEMBLY INSTRUCTIONS

- 1** Stand-up and unfold 3-sided base unit.



- 2** Place shelf **A** into the lower slots of the base unit. Place shelf **B** into the middle slots of the base unit.



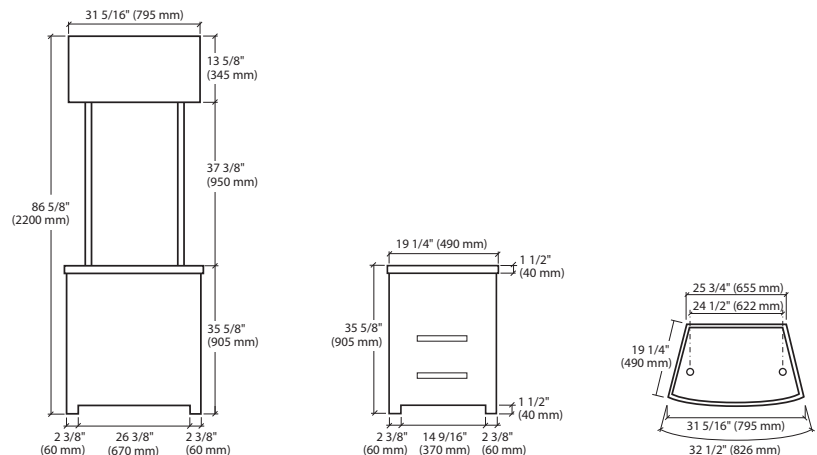
- 3** Place Top Shelf on the top of base unit.



- 4** Attach the header to the posts and insert the posts into the base unit.



UNIT:



GRAPHIC:

